

Wallowology! Joseph Canyon Outing

June 2018



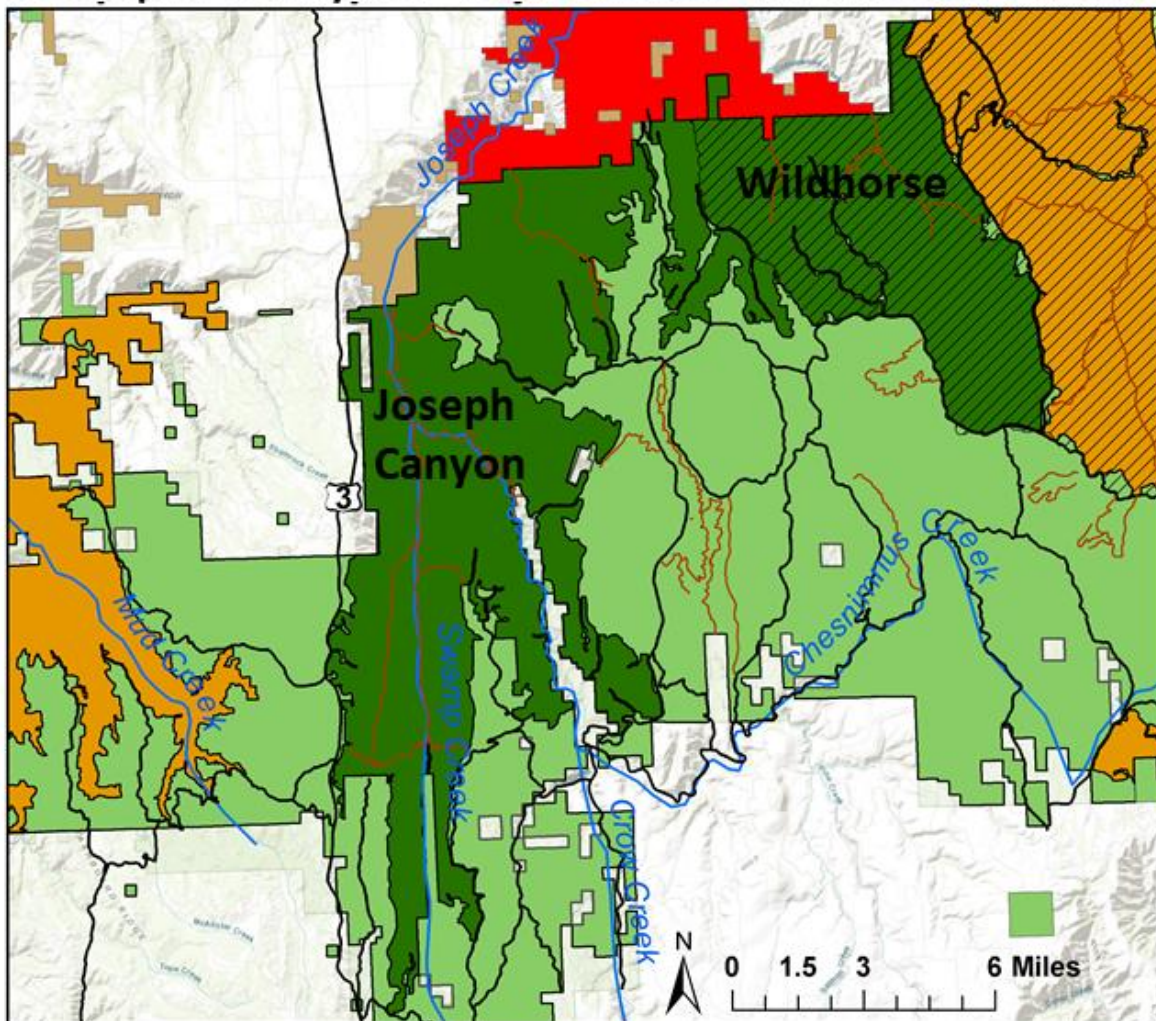
The Joseph Canyon Roadless Area on the Wallowa-Whitman National Forest includes over 40,200 acres of rugged northeast Oregon canyonlands. The grass-covered slopes and forest-covered draws intersperse to provide high-quality, secure wildlife habitat and a key travel corridor between the Hells Canyon and Wenaha-Tucannon Wilderness Areas. Elk, deer, cougar, and bear find important habitat here. Comprised of three main drainages: Joseph Creek, Swamp Creek and Davis Creek, Joseph Creek is a designated Wild and Scenic River within the roadless area. Over half the roadless area is within elk winter range and the northern part within Joseph Creek is used by a herd of Rocky Mountain bighorn sheep. The many rock cliffs provide nesting for raptors such as peregrine falcon, roosting sites for bats, and unique habitats for other wildlife species.

Hunting, horseback riding, hiking, backcountry ranching, and camping have long been popular in Joseph Canyon. The rugged country provides challenging recreational opportunities in deep, remote canyons, separated by secluded ridgetops with sweeping views.

In addition to its exceptional natural, ecological and scenic value, the Joseph Creek Country stands out for its significant cultural history. The Joseph Canyon Viewpoint 30 miles north of Enterprise overlooks the depths of Joseph Canyon and is one of 38 sites that form the Nez Perce National Historical Park. Nez Perce people used Joseph Canyon as a travel corridor between their winter and summer homes in the Wallowa Country. One of

their names for the area was ‘Condor Canyon.’ Condors historically lived in the Joseph Creek Country, and it’s not difficult to imagine them soaring over the 2,200-foot depths of Joseph Canyon visible from the Viewpoint. To the North, the Joseph Canyon Roadless Area adjoins the 15,000-acre Nez Perce Precious Lands Wildlife Area. Together, these lands function as a large, intact landscape that significantly heightens their conservation value.

Joseph Canyon-Wildhorse Roadless Areas



For more information contact David Mildrexler at davidm@wallowology.org. Wallowology Natural History Discovery Center, Joseph, Oregon.